



Transition to 'By Division' Elections

Map Consideration Hearing #2

October 18, 2023

Tentative Process/Timeline

First Pre-Map Hearing

- June 21, 2023

Second Pre-Map Hearing

- July 19, 2023

First Map Consideration Hearing

- September 20, 2023

Second Map Consideration Hearing

- October 18, 2023 (tonight)

Final Map Adoption Hearing and Approval

- November 15, 2023



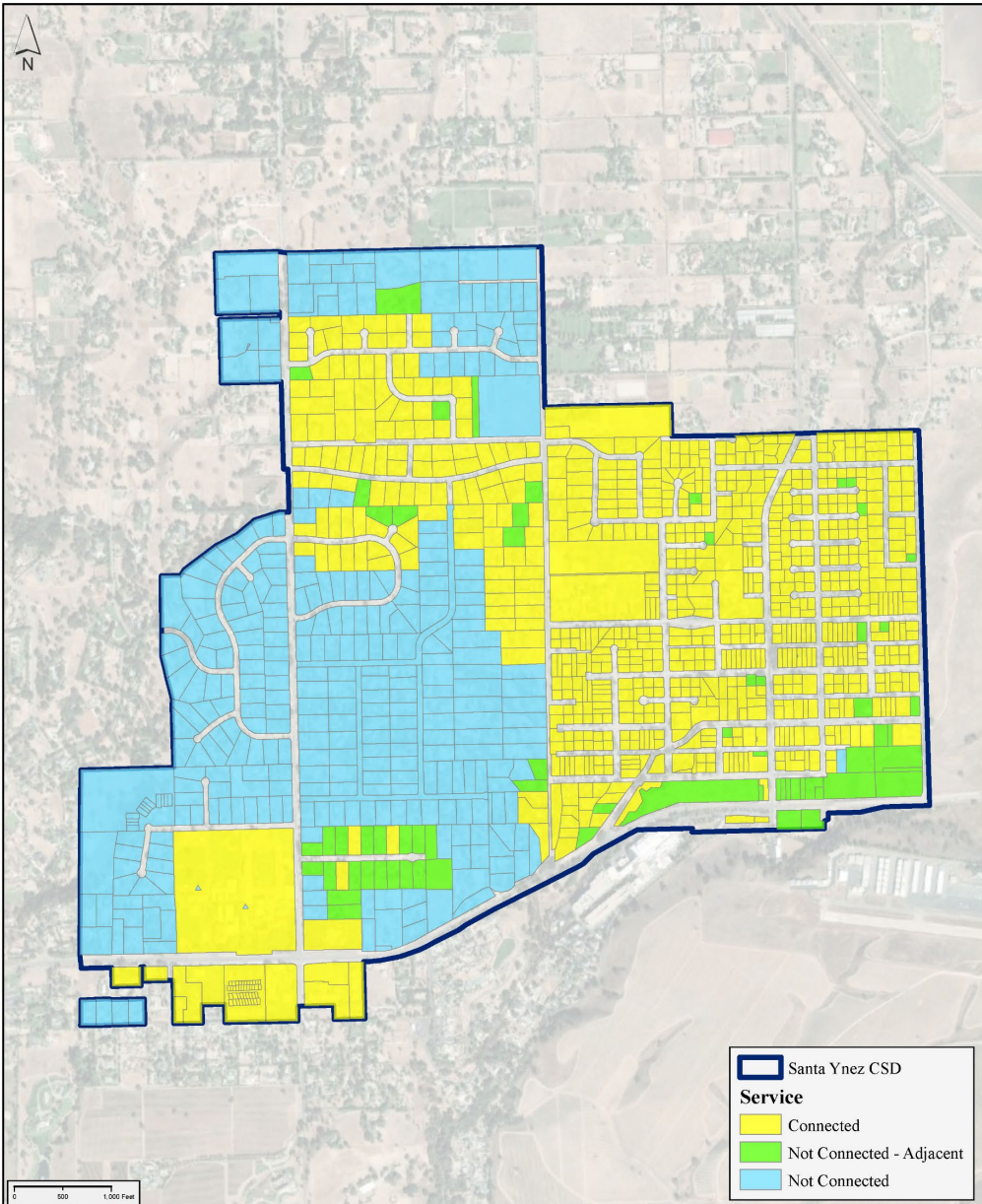
Overview

- Review Santa Ynez CSD demographics
- Process to create election divisions
- Review District division options
- Ways to provide input
- Q&A



Things to Remember

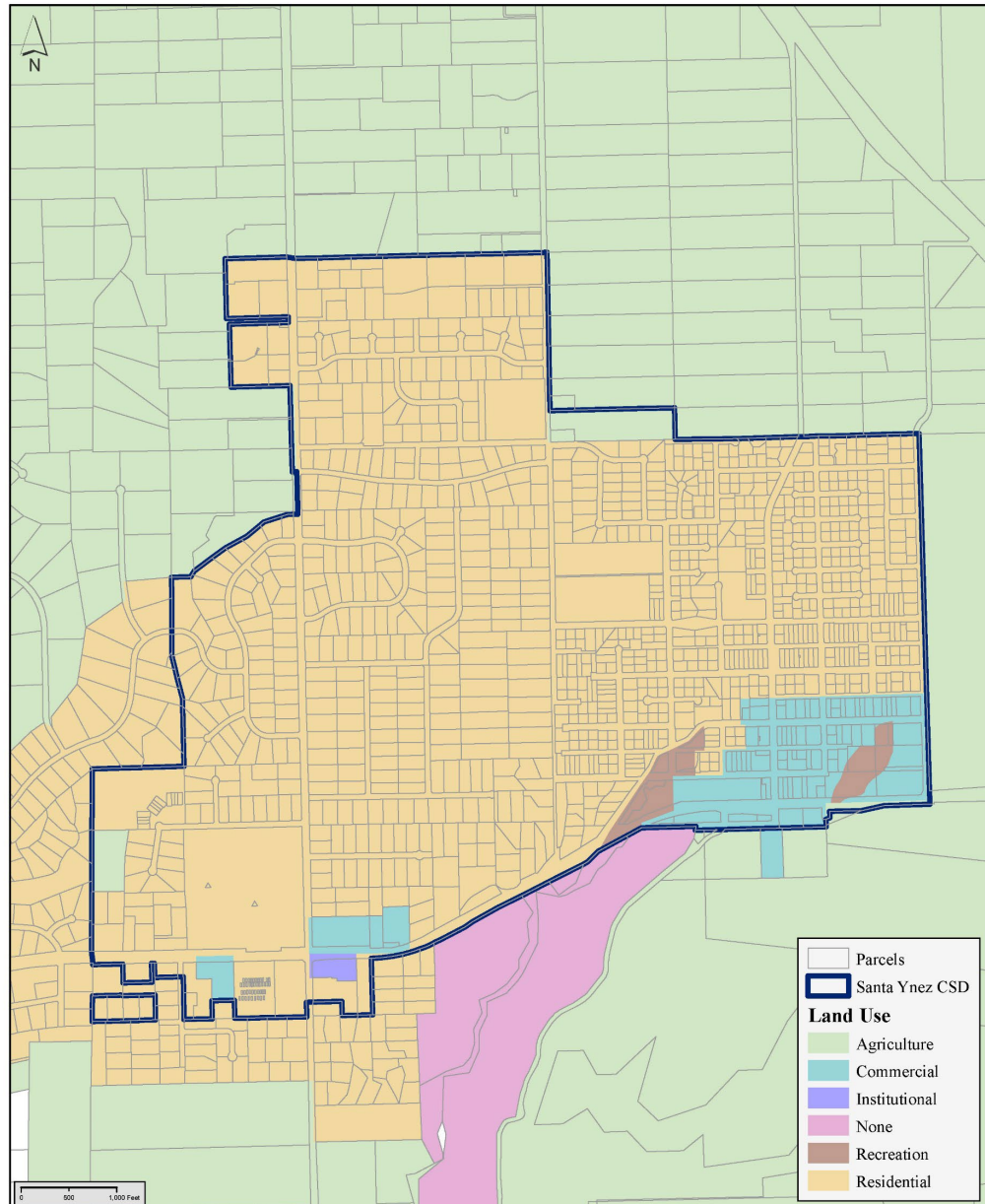
- Strive for population equality
 - No more than 10% total deviation
- Do not use race as the predominant factor
 - Only as one of many factors
- Focus on traditional criteria
 - Draw compact, contiguous areas, making use of existing topography and geography, while respecting communities of interest



**Santa Ynez Community Services District
Sewer Service**

Figure

Map Date: 6/12/2023

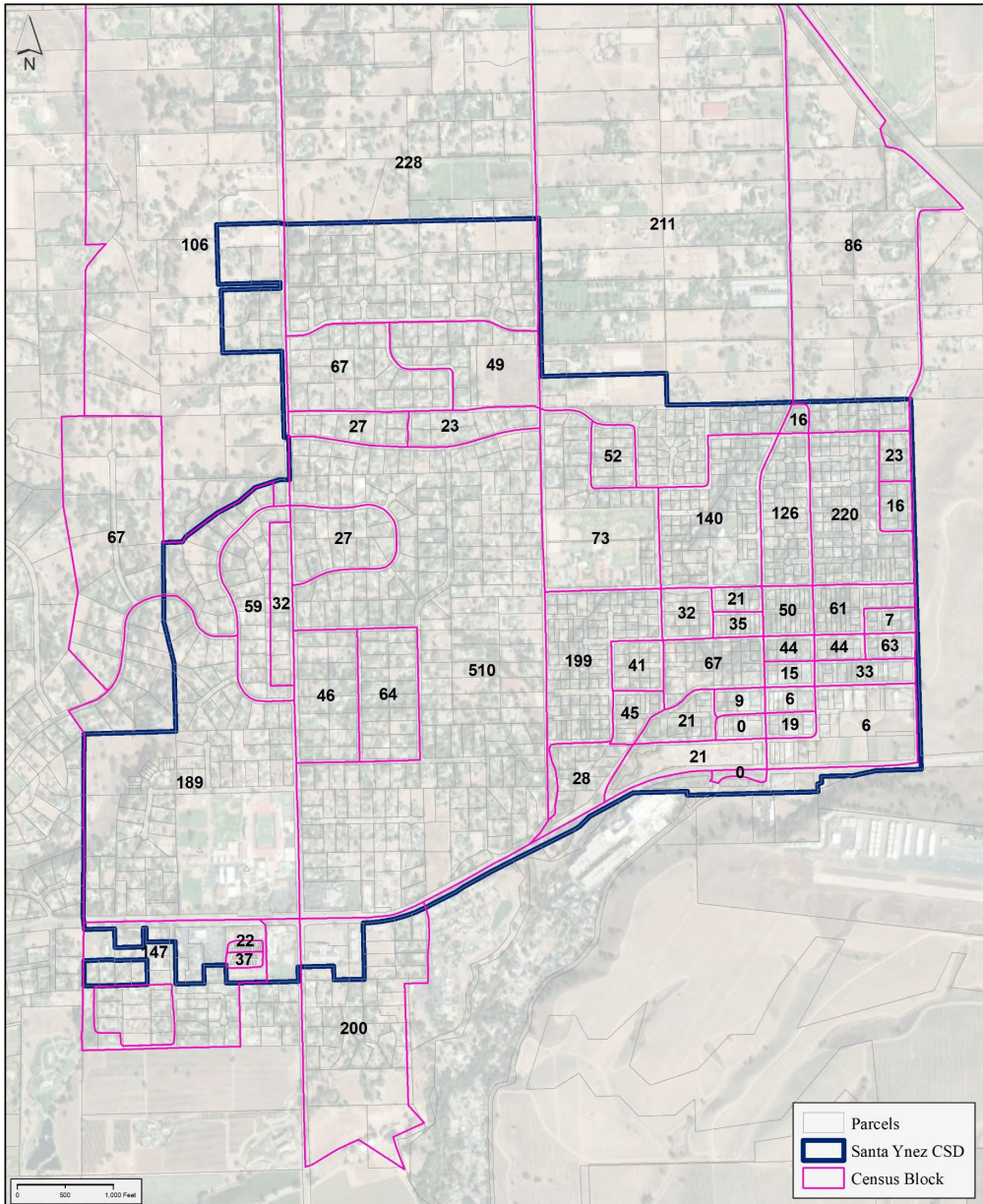


**Santa Ynez Community Services District
Zoning**

Figure

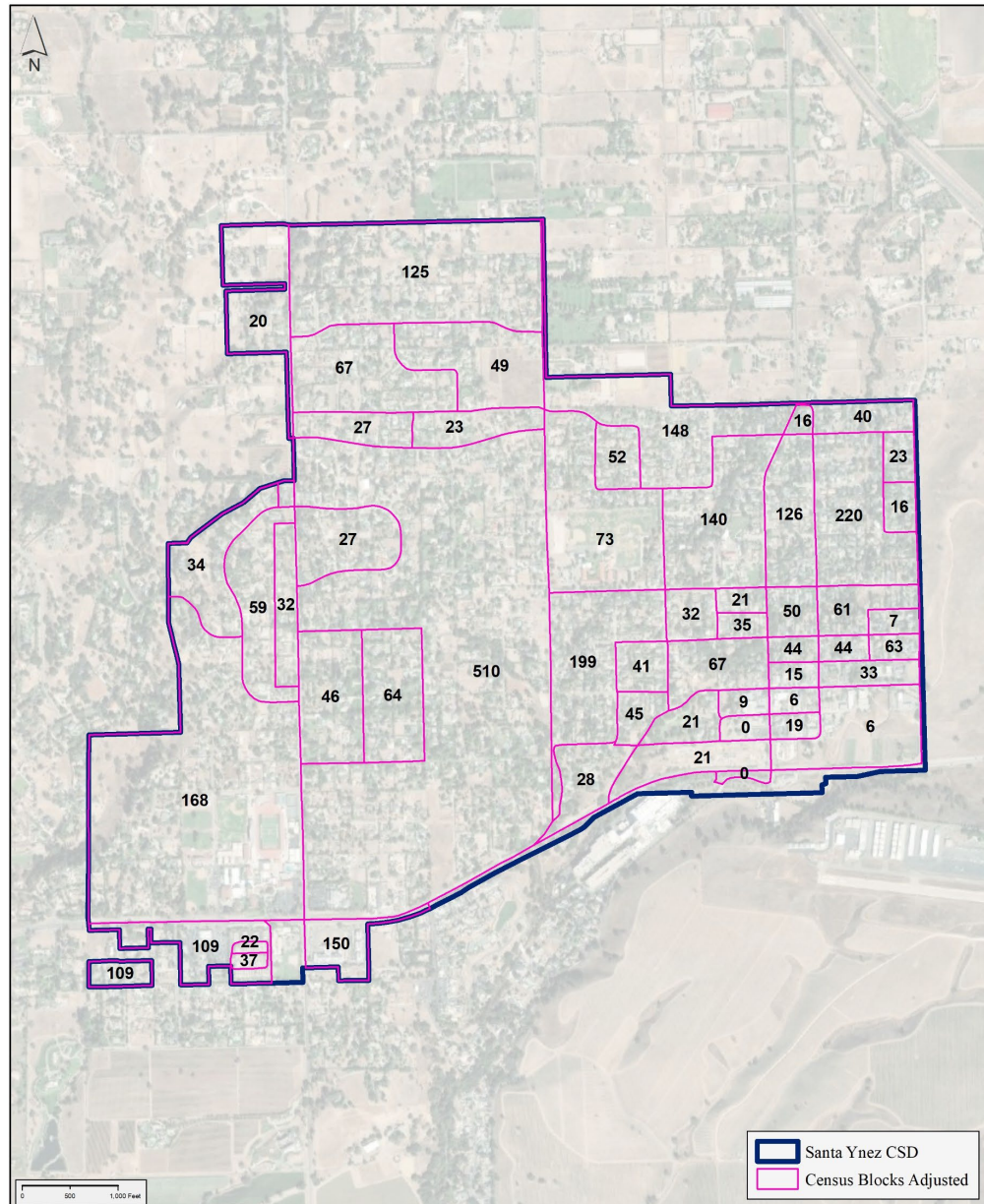
Map Date: 1/9/2023





Santa Ynez Community Services District Population

Figure
Map Date: 1/9/2023



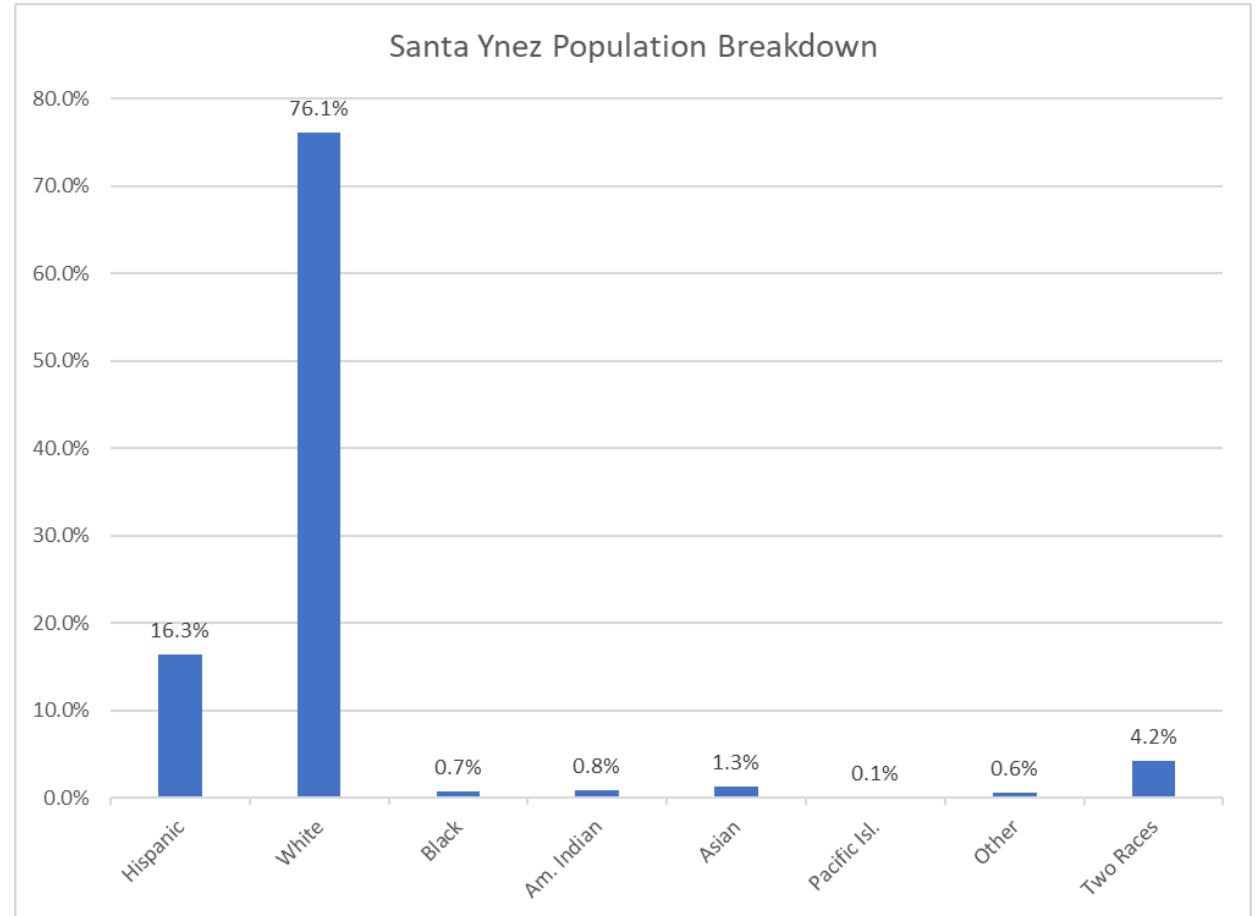
Santa Ynez Community Services District Population Adjusted

Figure
Map Date: 1/9/2023



Santa Ynez CSD Demographics

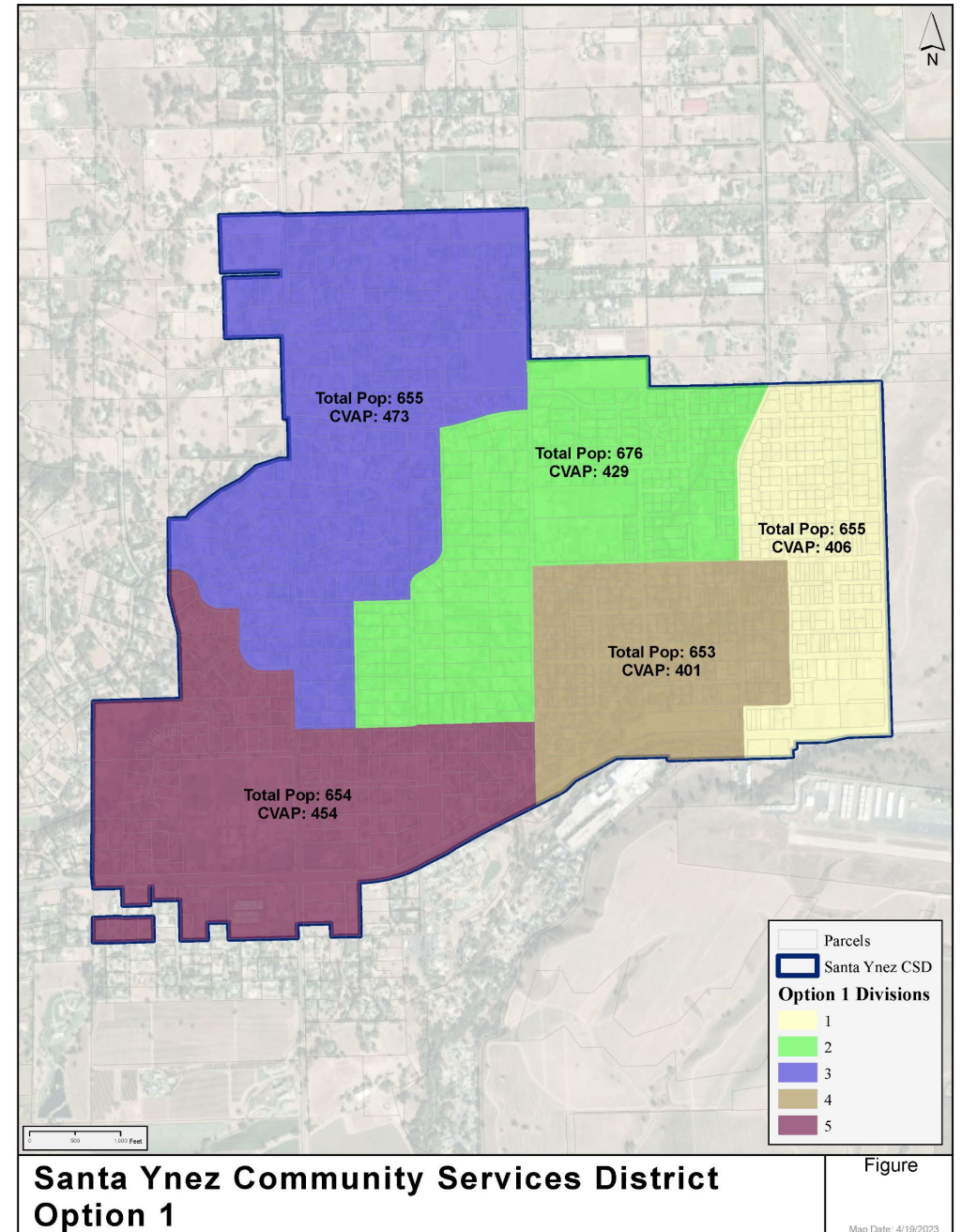
- Current 2020 Population - 3,300
 - 660 / division
- Ethnic Population
 - Hispanic (16%)
 - Asian (1.3%)
 - American Indian (0.8%)
- CVAP
 - 2,163 Total
 - 236 Hispanic



Option 1

Division	Tot Pop	Difference	% Dev
1	655	-4	-0.55%
2	676	17	2.57%
3	655	-4	-0.55%
4	653	-6	-0.86%
5	654	-5	-0.70%

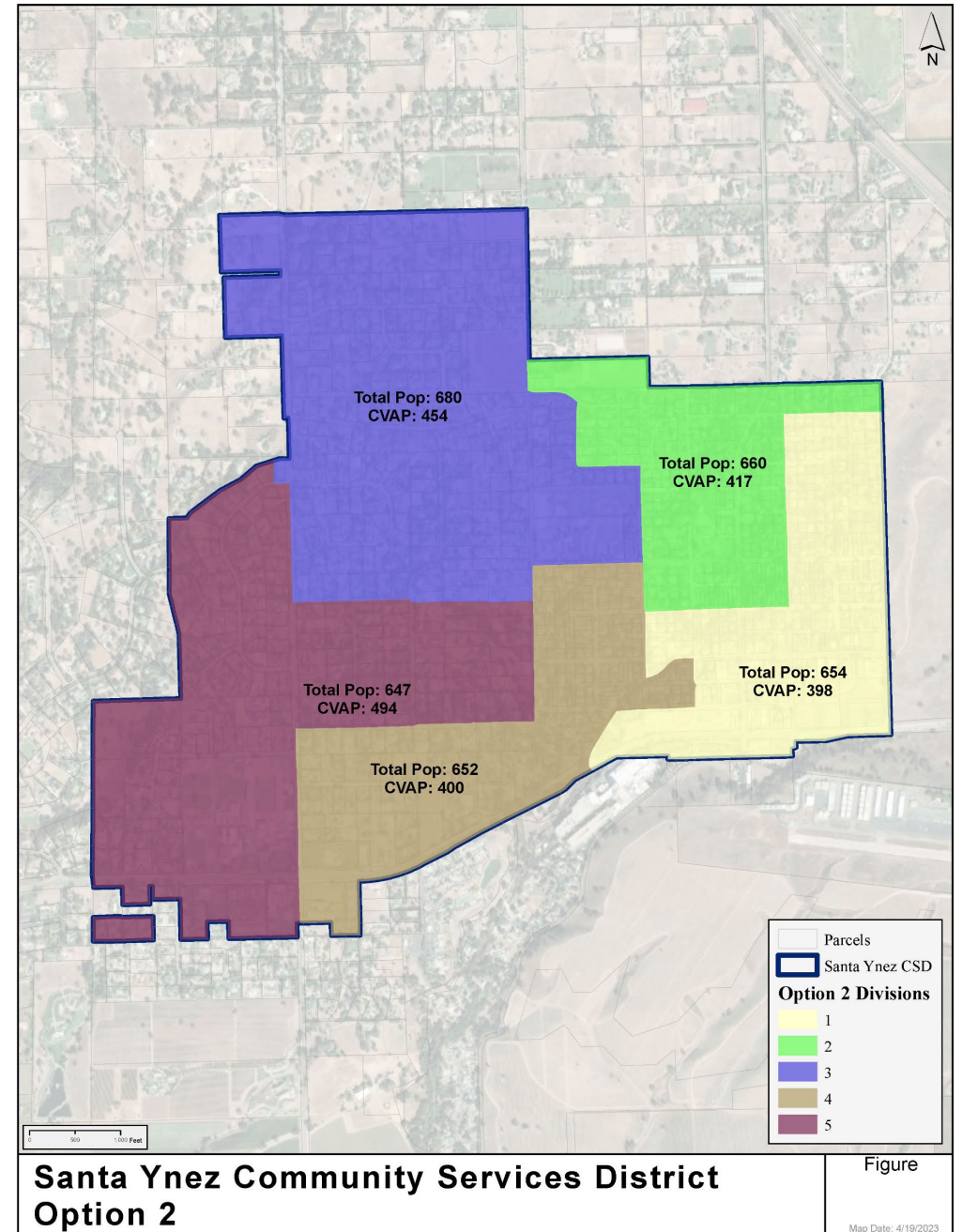
- Visual, natural boundaries (roads)
- Total Deviation: 3.5%



Option 2

Division	Tot Pop	Difference	% Dev
1	654	-5	-0.70%
2	660	1	0.21%
3	680	21	3.15%
4	652	-7	-1.01%
5	647	-12	-1.79%

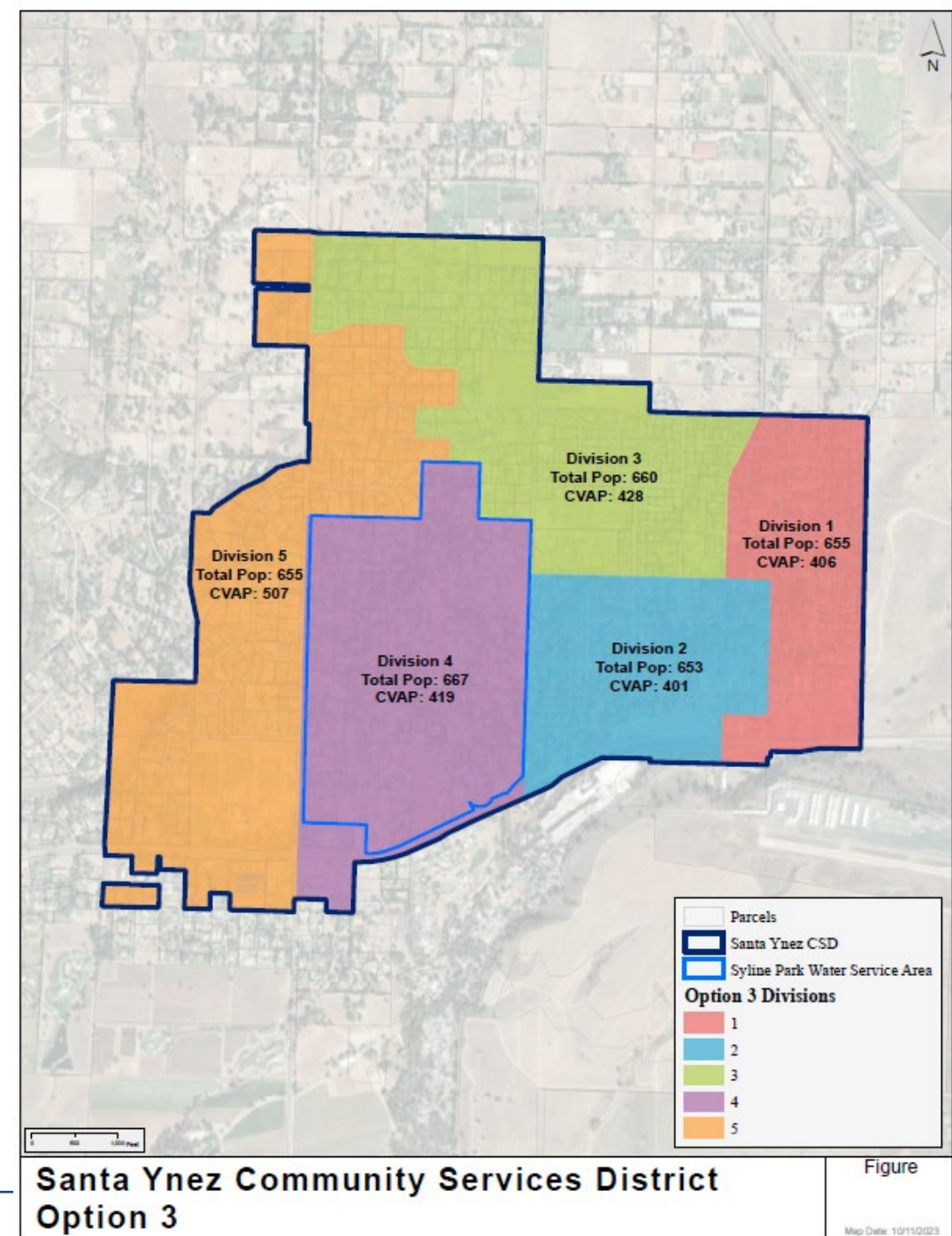
- Land Use
- Total Deviation: 4.9%



Option 3

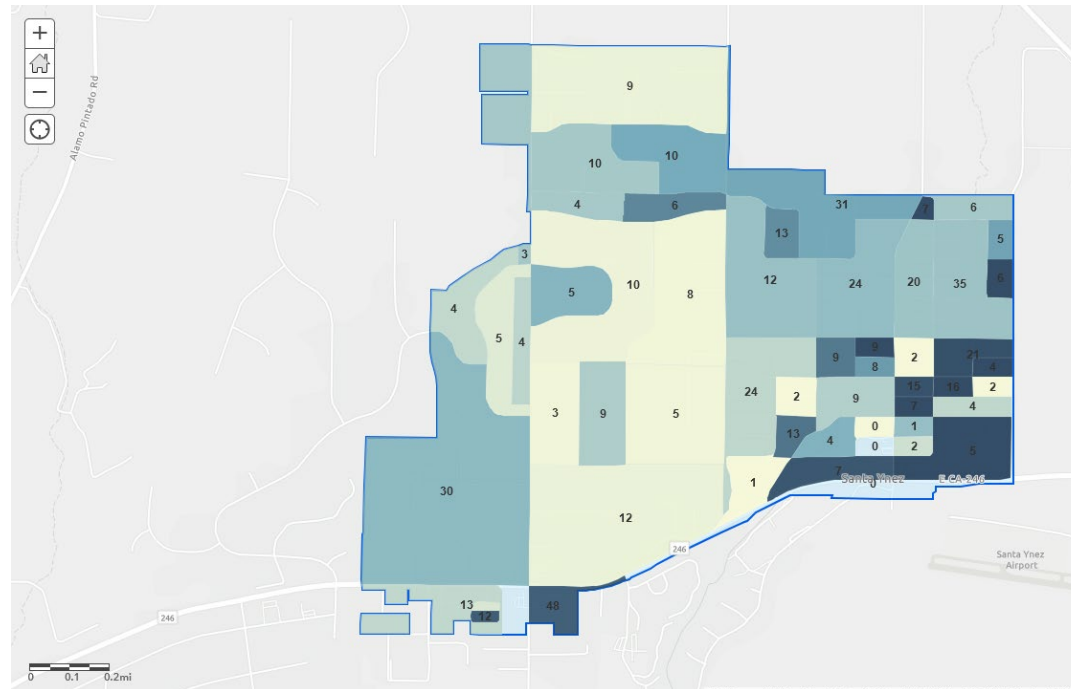
Division	Tot Pop	Difference	% Dev
1	655	-3	-0.46%
2	653	-5	-0.77%
3	660	2	0.30%
4	667	9	1.35%
5	655	-3	-0.46%

- Water Service Boundary
- Total Deviation: 2.12%



Simple Map Review Tool

- Online Interactive Review Map
 - ESRI's "[ArcGIS Online](#)" – similar to Google Maps in ease of use
 - Used to review, analyze and compare maps, not to create them

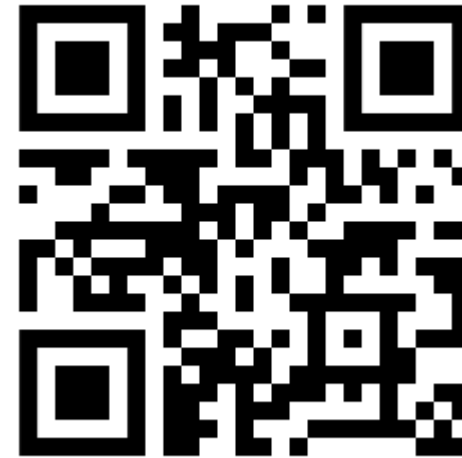


Ways to Provide Input

- Submit a comment or letter to the District
 - Communities of Interest
 - Draft map options
 - Questions regarding process
- Participate in one of the public meetings
- Call, email, snail mail, or drop by!



Online Map



Santa Ynez
Community Services District

1070 Faraday St, Santa Ynez, CA 93460

(805) 688-3008

Open Monday – Friday
8:30am to 5:00pm

<https://www.sycsd.com/>

